

# Human CD19 Protein

Cat. No. CD1-HM119

## Description

<b>Source</b>	Recombinant Human CD19 Protein is expressed from HEK293 with His tag at the C-Terminus It contains Pro20-Lys291.
<b>Accession</b>	P15391-1
<b>Molecular Weight</b>	The protein has a predicted MW of 34.7 kDa. Due to glycosylation, the protein migrates to 50-60 KDa based on Bis-Tris PAGE result.
<b>Endotoxin</b>	Less than 1 EU per µg by the LAL method.
<b>Purity</b>	>95% as determined by Bis-Tris PAGE

## Formulation and Storage

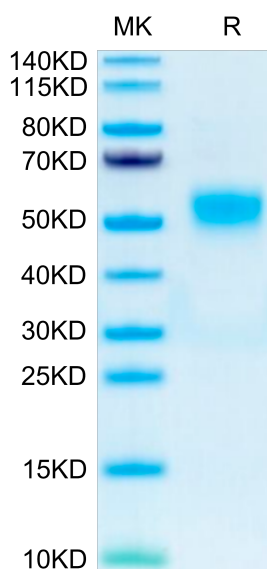
<b>Formulation</b>	Lyophilized from 0.22 µm filtered solution in PBS (pH 7.4). Normally 8% trehalose is added as protectant before lyophilization.
<b>Reconstitution</b>	Centrifuge the tube before opening. Reconstituting to a concentration more than 100 µg/ml is recommended. Dissolve the lyophilized protein in distilled water.
<b>Storage</b>	-20 to -80°C for 12 months as supplied from date of receipt. -80°C for 3 months after reconstitution. Recommend to aliquot the protein into smaller quantities for optimal storage. Please minimize freeze-thaw cycles.

## Background

CD19 is a 95 kDa transmembrane glycoprotein that plays a central role in B cell activation and humoral immune responses. Functions as coreceptor for the B-cell antigen receptor complex (BCR) on B-lymphocytes. Decreases the threshold for activation of downstream signaling pathways and for triggering B-cell responses to antigens. Activates signaling pathways that lead to the activation of phosphatidylinositol 3-kinase and the mobilization of intracellular Ca<sup>2</sup> stores.

## Assay Data

### Bis-Tris PAGE



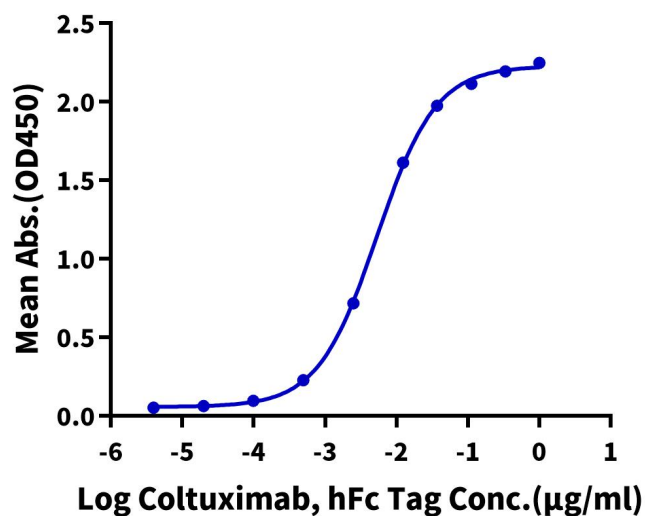
Human CD19 on Bis-Tris PAGE under reduced condition. The purity is greater than 95%.

### ELISA Data

## Assay Data

**Human CD19, His Tag ELISA**

0.2µg Human CD19, His Tag Per Well

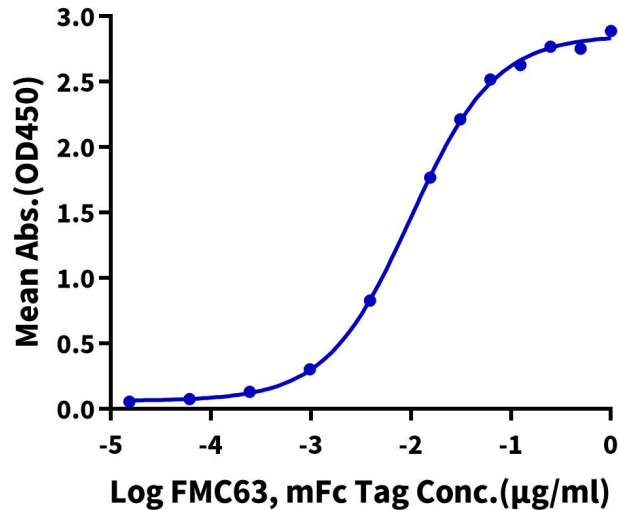


Immobilized Human CD19, His Tag at 2 µg/ml (100 µl/Well) on the plate. Dose response curve for Coltuximab, hFc Tag with the EC50 of 5.3 ng/ml determined by ELISA (QC Test).

## ELISA Data

**Human CD19, His Tag ELISA**

0.2µg Human CD19, His Tag Per Well



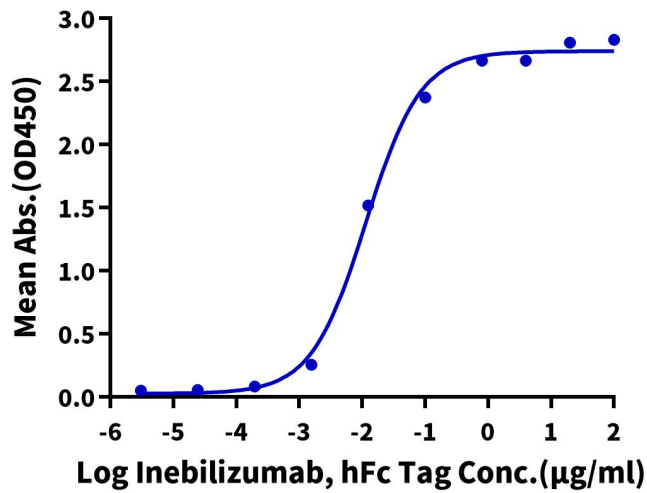
Immobilized Human CD19, His Tag at 2 µg/ml (100 µl/well) on the plate. Dose response curve for FMC63, mFc Tag with the EC50 of 10.0 ng/ml determined by ELISA (QC Test).

## ELISA Data

## Assay Data

**Human CD19, His Tag ELISA**

0.1µg Human CD19, His Tag Per Well

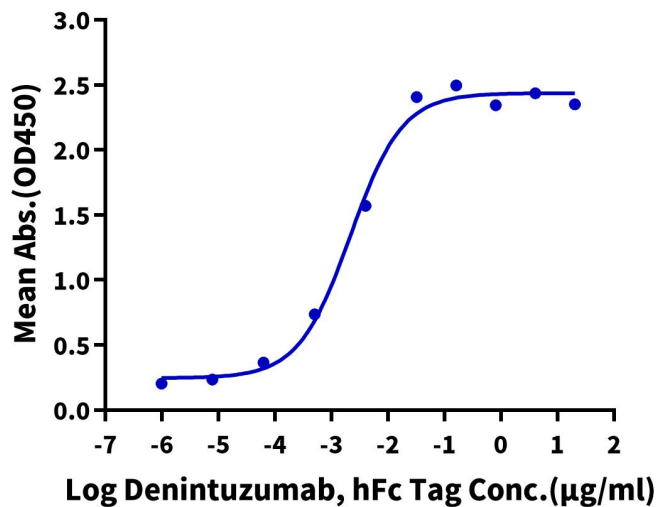


Immobilized Human CD19, His Tag at 1 µg/ml (100 µl/Well) on the plate. Dose response curve for Inebilizumab, hFc Tag with the EC50 of 11.5 ng/ml determined by ELISA.

## ELISA Data

**Human CD19, His Tag ELISA**

0.1µg Human CD19, His Tag Per Well



Immobilized Human CD19, His Tag at 1 µg/ml (100 µl/well) on the plate. Dose response curve for Denintuzumab, hFc Tag with the EC50 of 2.1 ng/ml determined by ELISA.